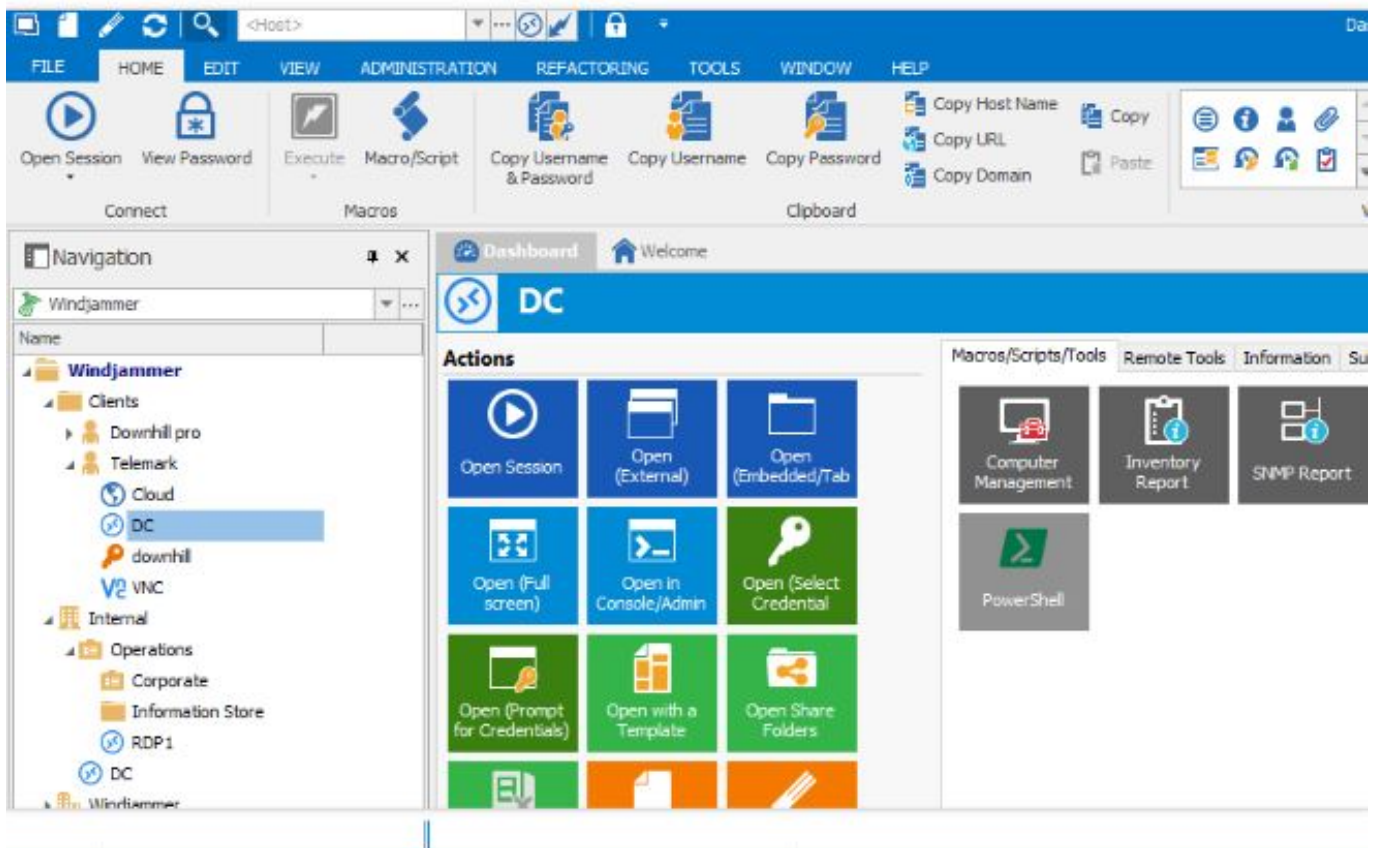




0-WEB.ru

[Mstsc Vs Mstsc\\_Admin](#)



[Mstsc Vs Mstsc\\_Admin](#)



0-WEB.ru

---

In this version of Remote Desktop Connection, if the Terminal Server role service is installed on the remote ... Type `mstsc /v:server /admin`.. RD Easy Print is also not available in any session when you make an administrative connection (`mstsc/admin`). Table 67 and Table 68 show situations in which ...

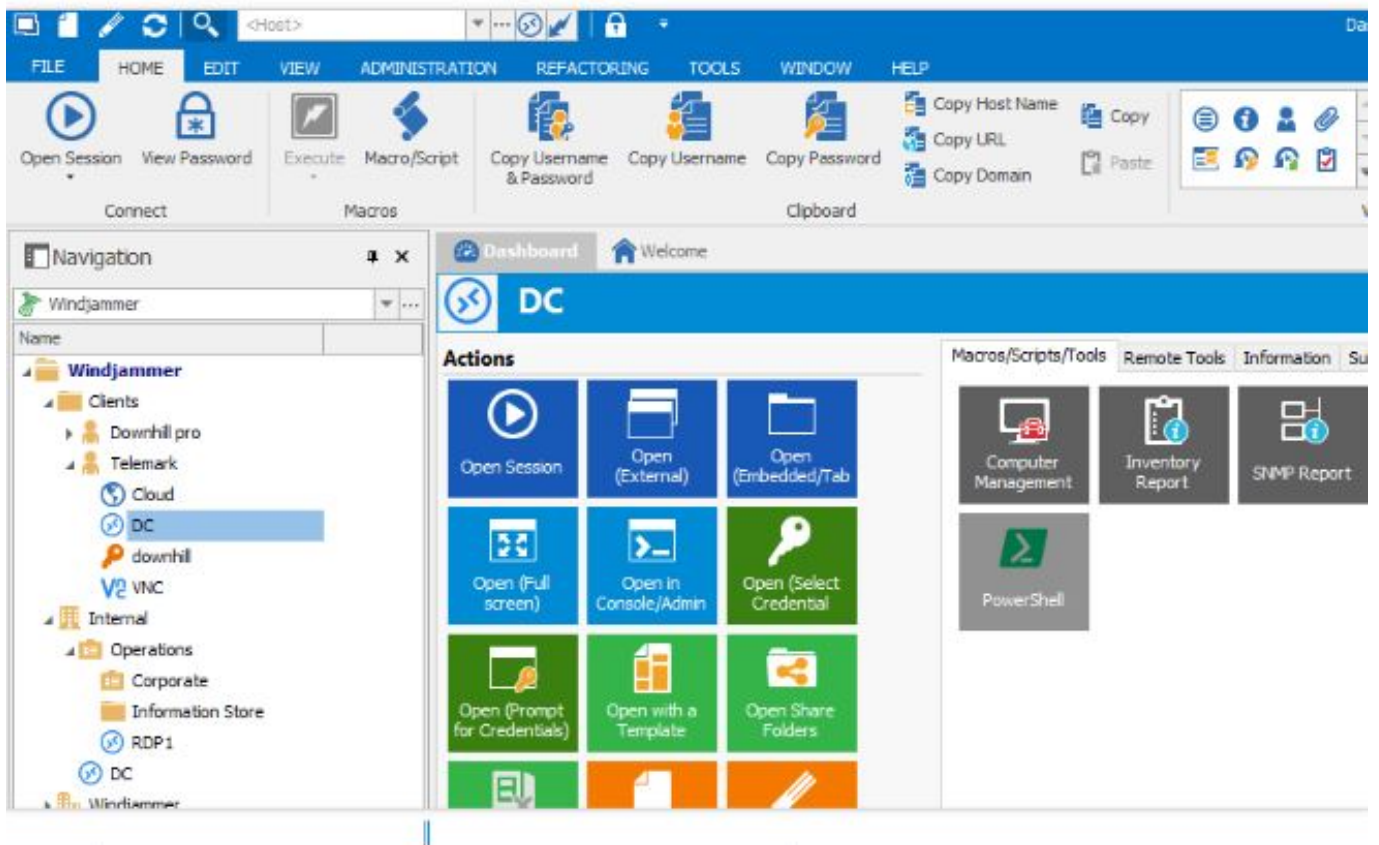
1. [difference between mstsc and mstsc /admin](#)
2. [mstsc /admin working but not mstsc](#)
3. [mstsc /admin mstsc /console](#)

If you may want to run Desktop Console from a batch file, for example RDC over VPN, you can use `mstsc /v:servername /console` command. `Mstsc`. Creates .... Remote Desktop is one of the favourite tool for every IT Pro and lot of times can give ... How to enable Restricted Admin Mode in Remote Desktop Connections ... How to enable vTPM in Windows Server 2016 HYPER-V.

## **difference between mstsc and mstsc /admin**

difference between `mstsc` and `mstsc /admin`, `mstsc` vs `mstsc /admin`, `mstsc /admin` working but not `mstsc`, `mstsc` and `mstsc /admin`, `mstsc /admin mstsc /console`, what is `mstsc /admin`, `rdp mstsc /admin`, remote desktop `mstsc admin`, `mstsc admin rdp` file [Bloons TD 6 Apk Mod Free Download For Android](#)

... to log on to one of the directly you will need to use the `mstsc /v:server /admin` switch. ... Microsoft Remote Desktop Connection Console or Admin Session.. If you may want to run Desktop Console from a batch file, for example RDC over VPN, you can use `mstsc /v:servername /console` command.. `C:\Users\administrator.computer>mstsc /shadow:3 /control`. 5) The other user (user1 in this example) will get a popup called "remote control ... [EVO PDF Viewer Control for Windows Forms and WPF 7.0](#)



[Project Catherine Free Download PC Game](#)

## mstsc /admin working but not mstsc

[How To Hack Diamonds Coins In Love Nikki – Love Nikki Dress UP](#)

Remote Desktop Protocol (RDP) is a proprietary protocol developed by Microsoft, which ... The "shadow" feature from RDP 7, which allowed an administrator to monitor (snoop) on a RDP connection has been ... In July 2019, Microsoft issued a security patch for CVE- 2019-0887, a RDP vulnerability that affects Hyper-V.. mstsc.exe {ConnectionFile | /v:ServerName[:Port]} [/console] [/f] [/w:Width/h:Height] /v - specifies the .... A list of the best remote desktop connection managers. As a System Administrator it is common to establish multiple RDP connections on a day .... RDP on the Radar. Use /v switch in this case. Remote desktop server requires the user to authenticate with the campus VPN before connecting to it. Remote ... [Weekend Watch: Collection of Nokia Lumia 930 hands on with WP8.1, Cortana and Action Centre demos](#)

## mstsc /admin mstsc /console

[\[EXCLUSIVE\] Export WordPress Data to EXCEL or CSV file](#)

If you've used Remote Desktop Services before, or Terminal Services if you're as old as ... Keys and tscon to access an administrator RDP session — without even logging into the server. ... <https://www.youtube.com/watch?v=OgsoIoWmhWw..> An application on several servers that my team manages requires that we specify the /admin switch when using mstsc.exe to establish an RDP .... Restricted Admin mode for Remote Desktop Connections can be implemented for each session using a command line switch to start the Remote .... mstsc.exe /?. The syntax is as follows: MSTSC [] [/v:] [/g:] [/admin] [/f[ullscreen]] [/w: .... Open in Console/Admin Mode. Connect to the console session of a server using Remote Desktop for Administration. Open (Select Credentials)... Prompts you .... rdp connection files. Syntax. mstsc.exe {ConnectionFile | /v:ServerName[:Port]}

---

[/console] [/f] .... Wow, nice and helpful answers I see. Hate replies like that. /admin connects you to the RDP session as admin overruling all warnings. So if you ... 90cd939017 [My Time At Portia Download](#)

90cd939017

[Lyrics Man Made – A Flock Of Seagulls](#)  
[Macgo Blu-ray Player 2.17.4.3289 Crack](#)  
[Serenity Sol Rising](#)